

HOW (AND WHY) YOU SHOULD USE GIT

ANNA WHITNEY

NOVEMBER 3, 2015

WHY

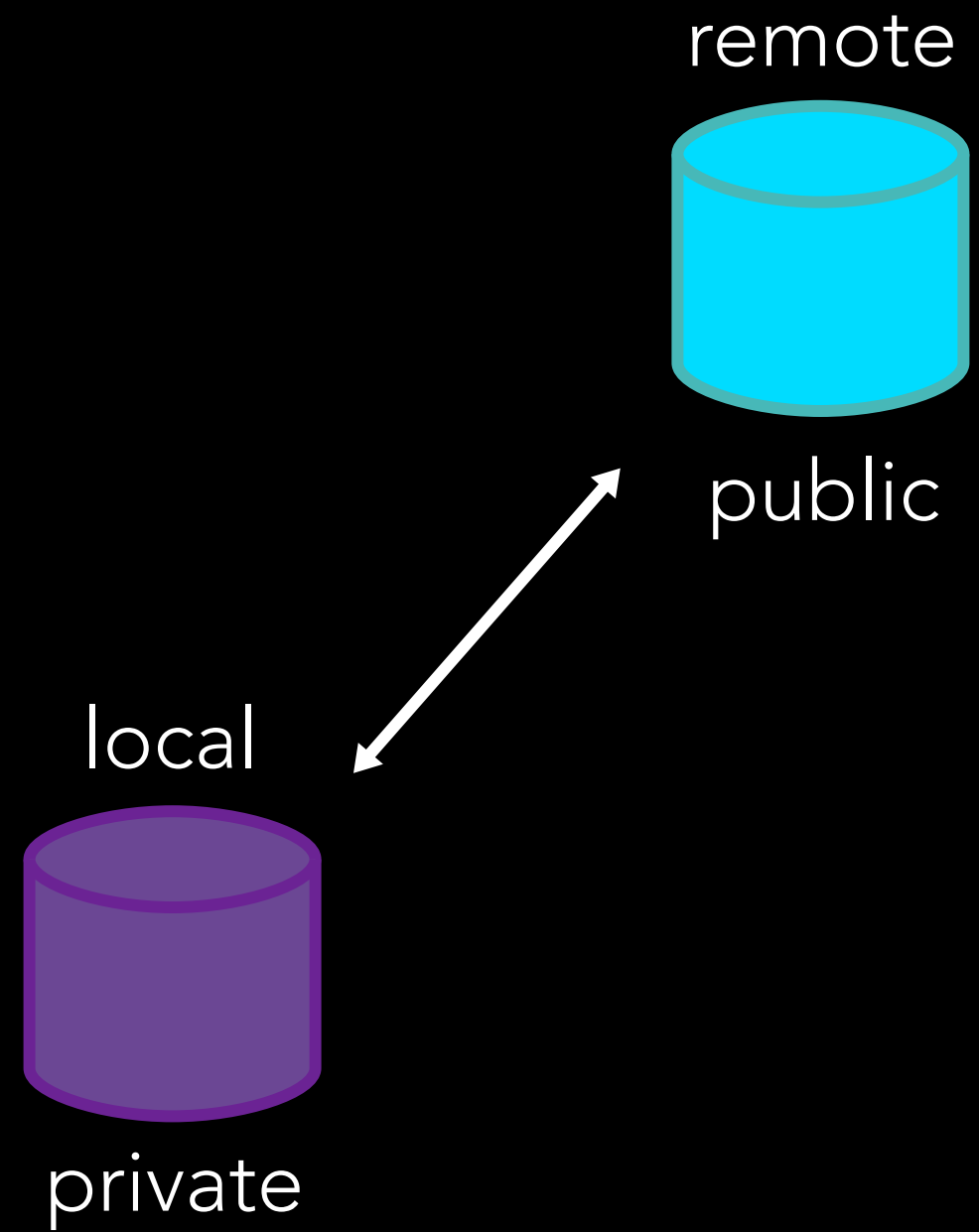
THIS IS GIT. IT TRACKS COLLABORATIVE WORK
ON PROJECTS THROUGH A BEAUTIFUL
DISTRIBUTED GRAPH THEORY TREE MODEL.

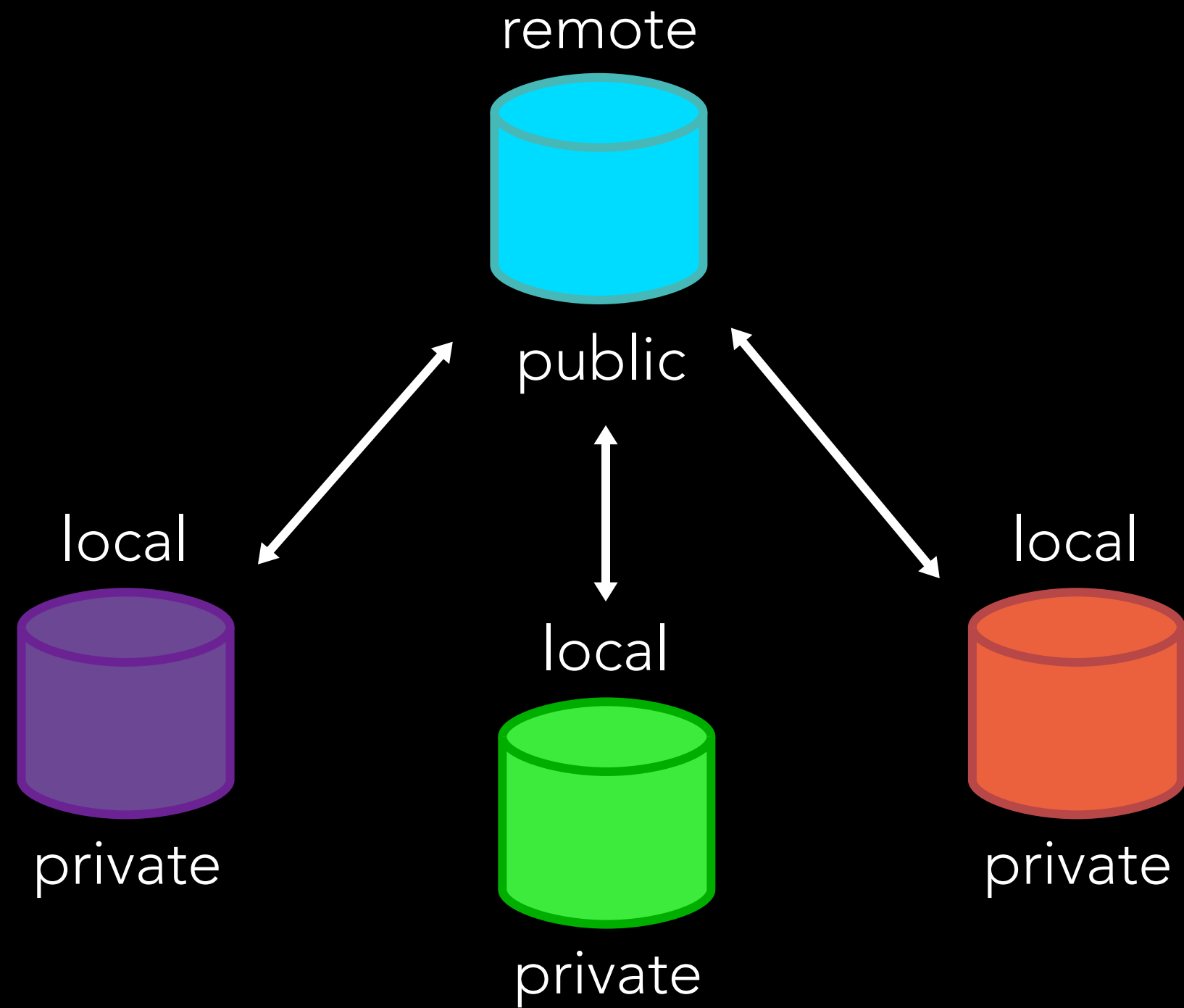
COOL. HOW DO WE USE IT?

NO IDEA. JUST MEMORIZE THESE SHELL
COMMANDS AND TYPE THEM TO SYNC UP.
IF YOU GET ERRORS, SAVE YOUR WORK
ELSEWHERE, DELETE THE PROJECT,
AND DOWNLOAD A FRESH COPY.

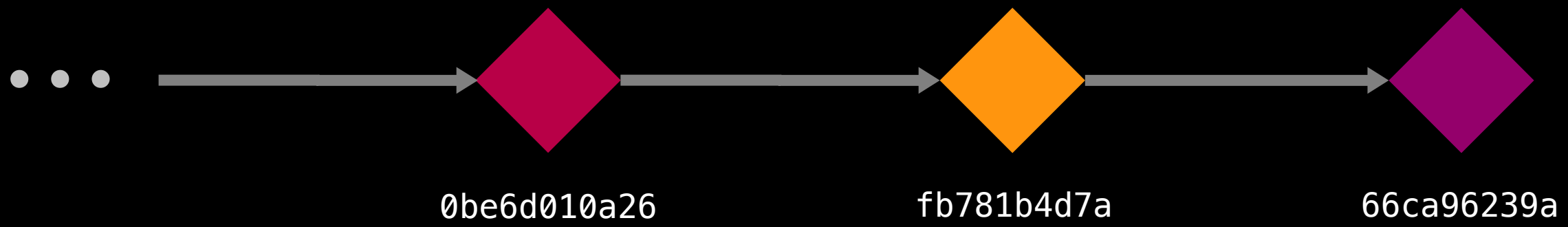


HOW





git clone

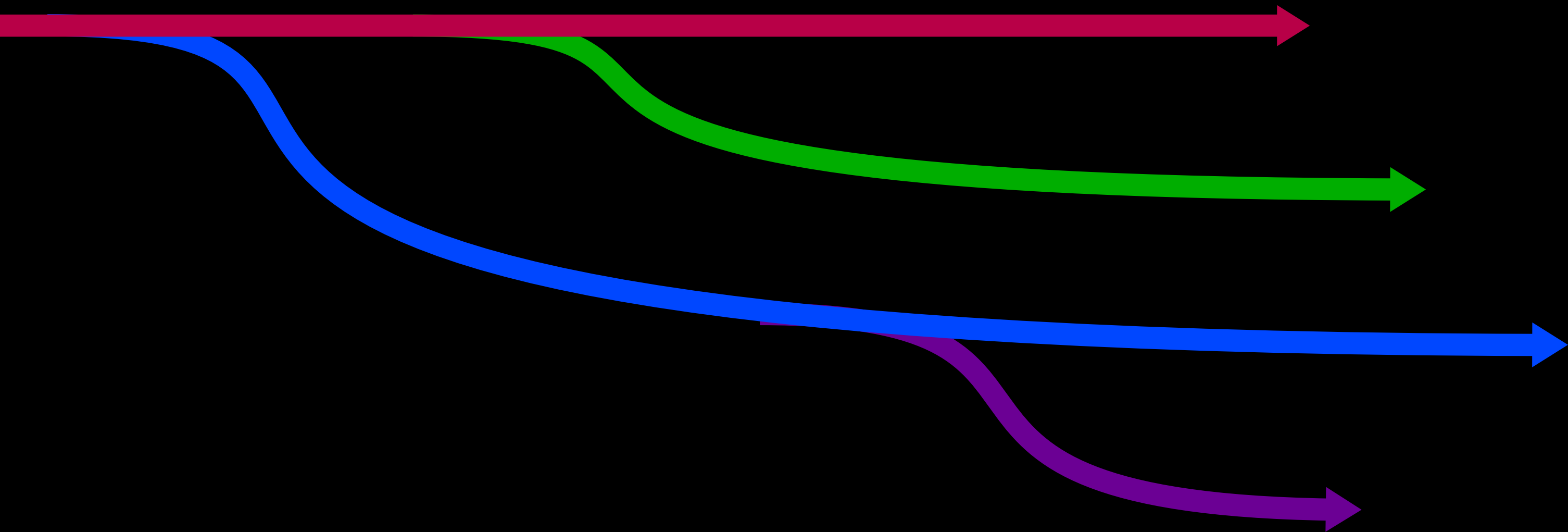


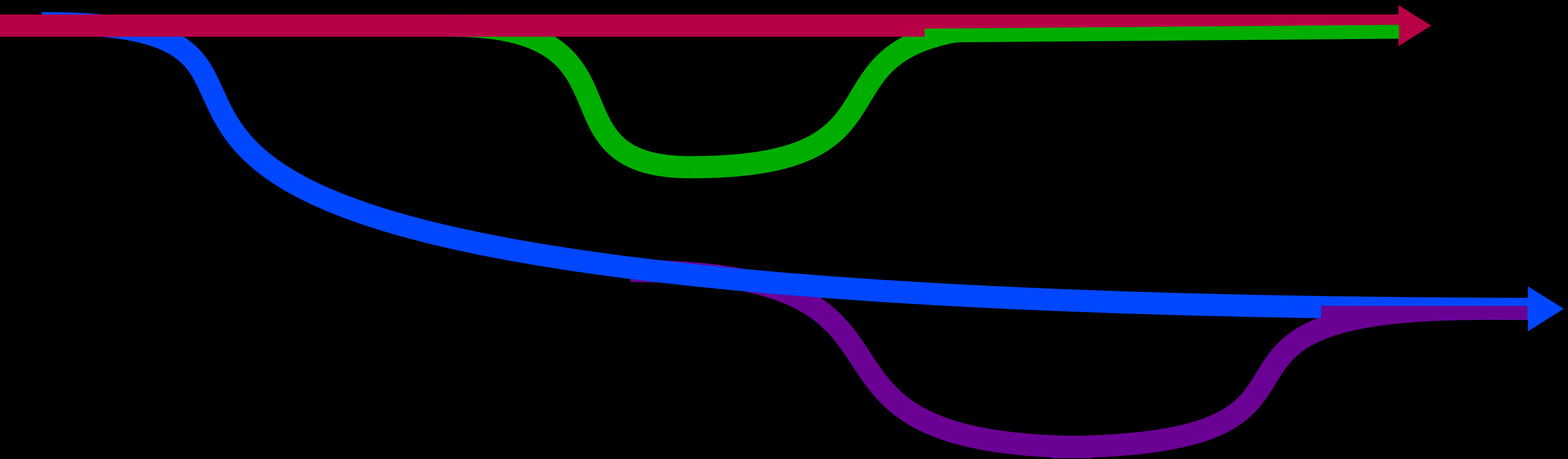
git commit

```
git pull
```

```
git push
```

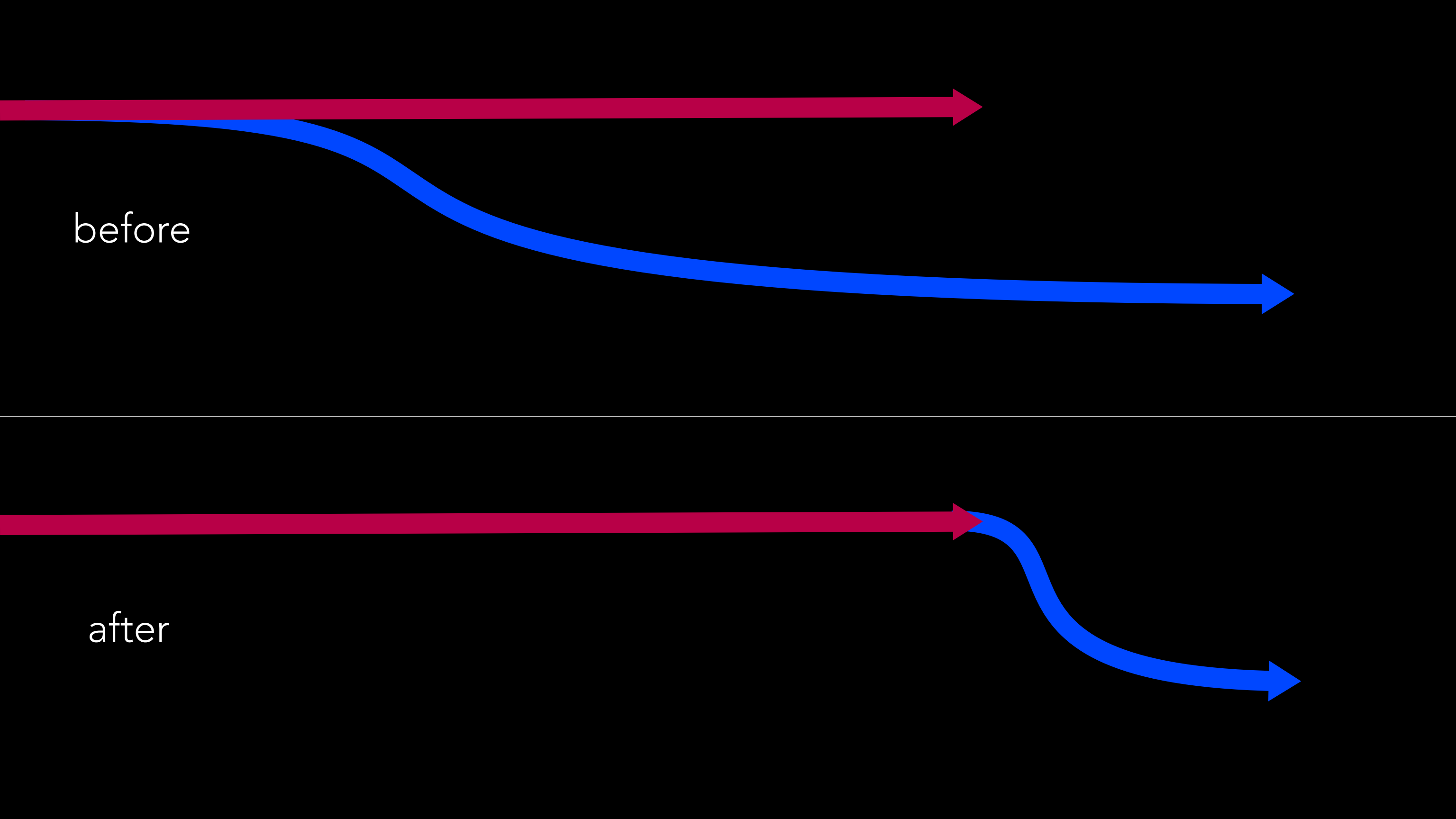
git branch
git checkout





```
git merge
```

git rebase



QUESTIONS?