

CS50 for JDs

cs50.harvard.edu/hls/2019/winter/

Cybersecurity

Deleting Files

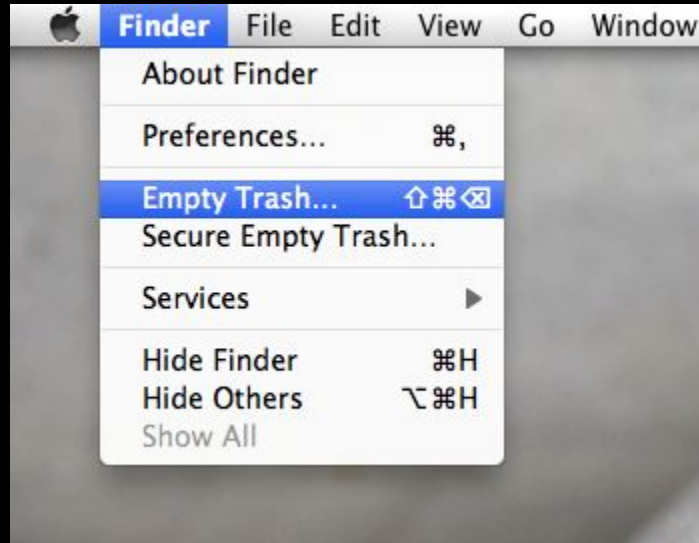


Image source: dr-fone.com

Protecting Client Data

- Encrypt your hard drive

Protecting Client Data

- Avoid insecure wireless networks

Protecting Client Data

- Use password managers

Protecting Client Data

- Use complex passwords

Protecting Client Data

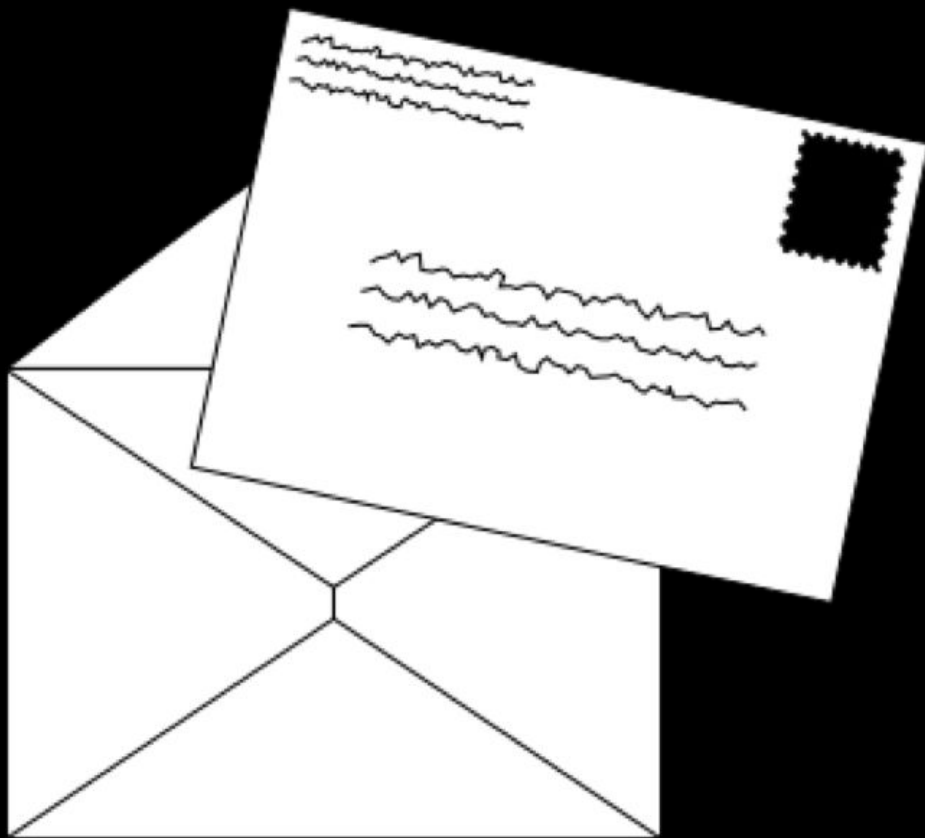
- Change your passwords

Protecting Client Data

- Create backups

Internet Technologies, Cloud Computing

Internet Technologies, Cloud Computing

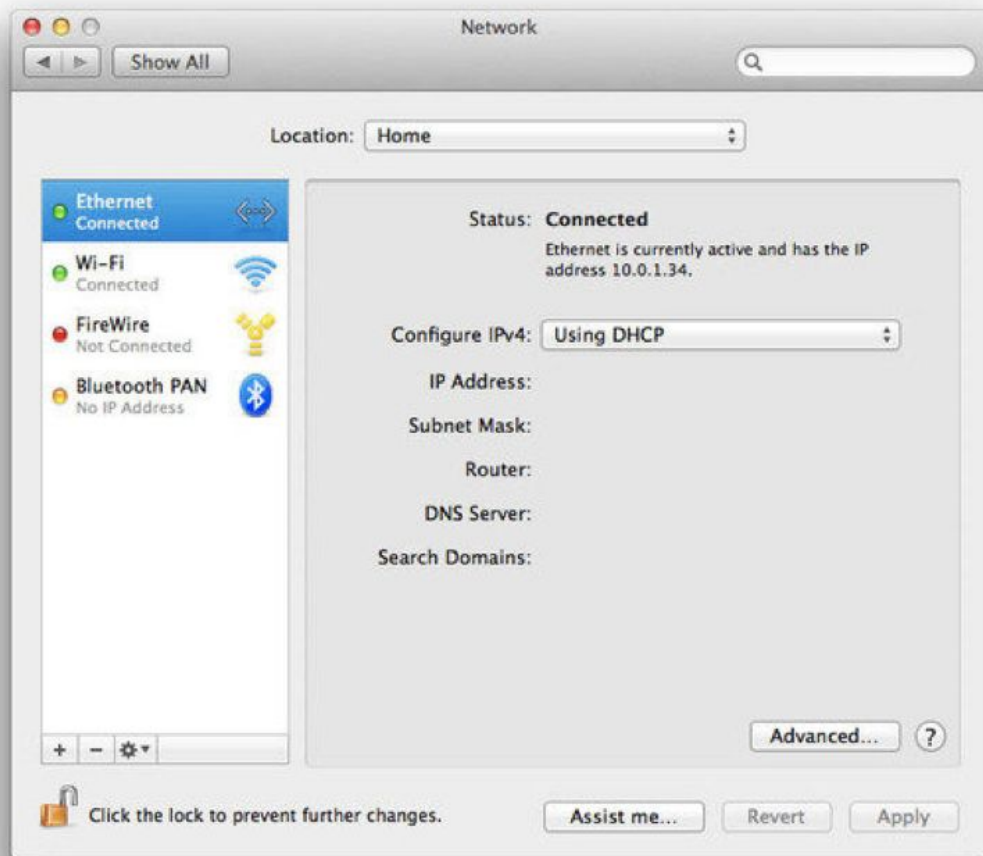


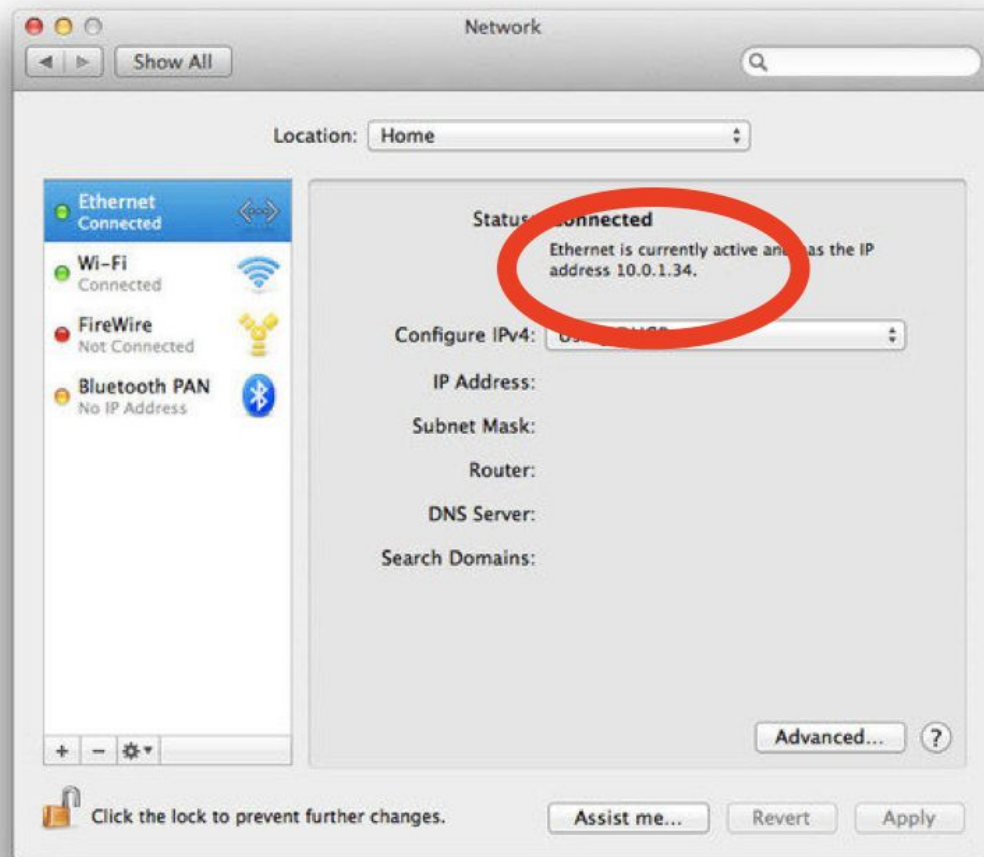
DHCP

TCP/IP

###.

- 10.###
- 172.16.## – 172.31.##
- 192.168.##







Settings



ETHERNET

Allow your PC to be discoverable by other PCs and devices on this network. We recommend turning this on for private networks at home or work, but turning it off for public networks to help keep your stuff safe.



On

Properties

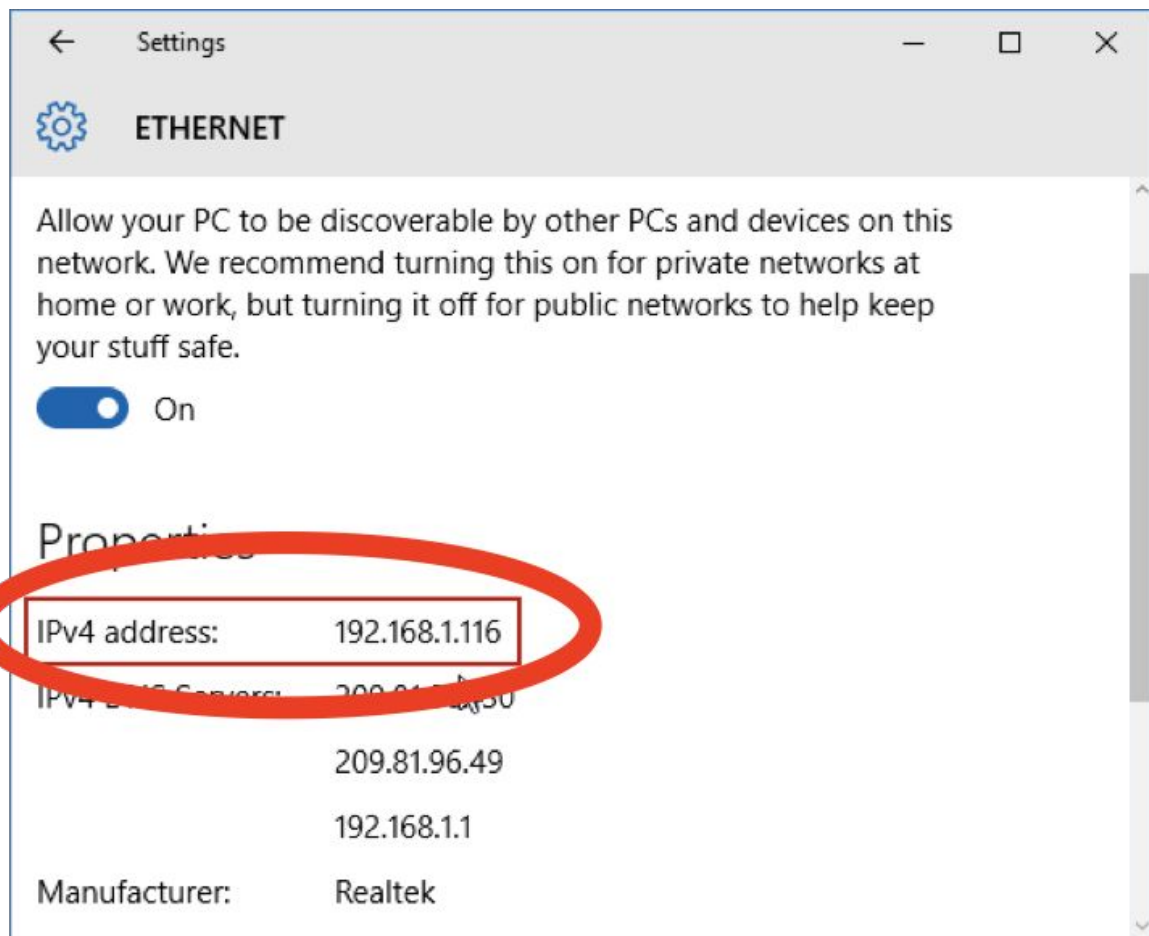
IPv4 address:	192.168.1.116
---------------	---------------

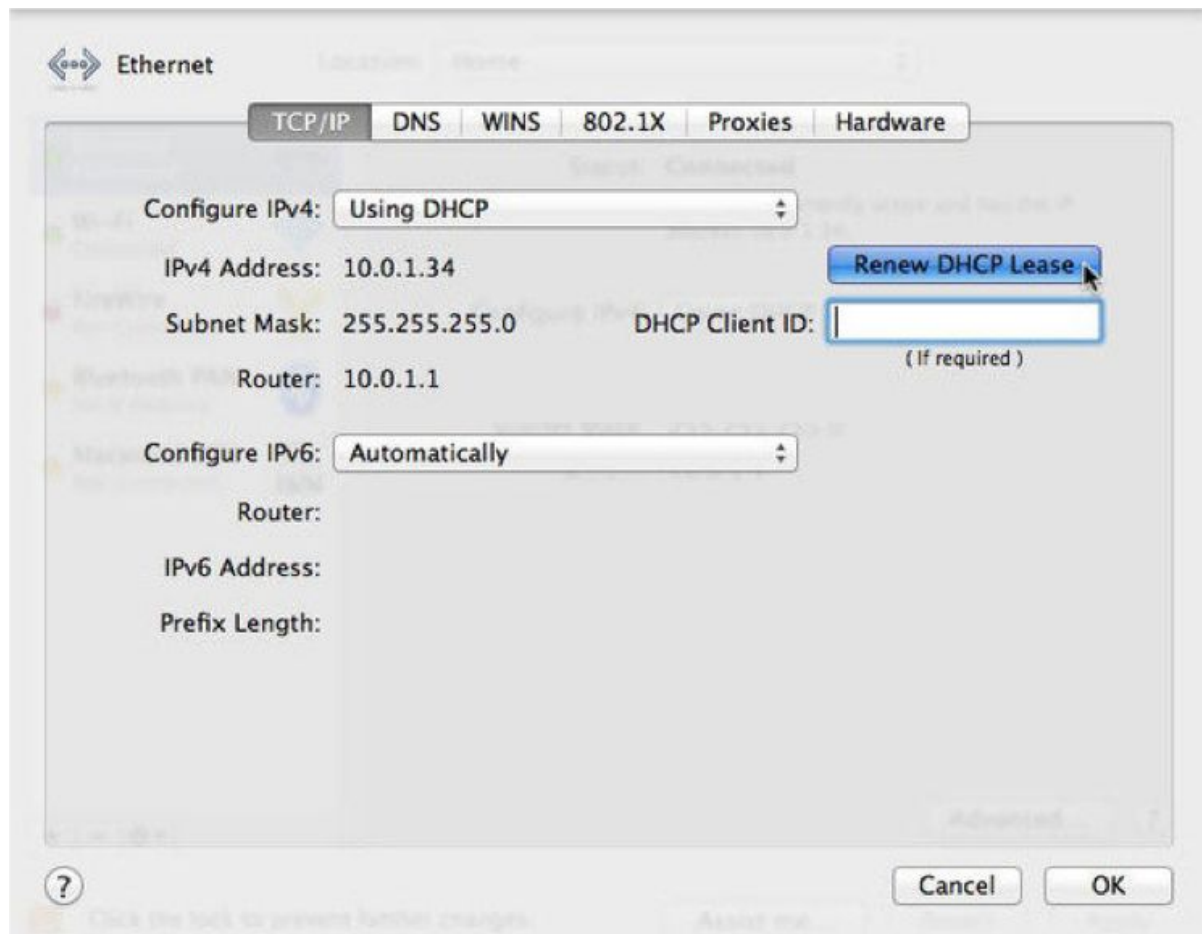
IPv4 DNS Servers:	209.81.96.30
-------------------	--------------

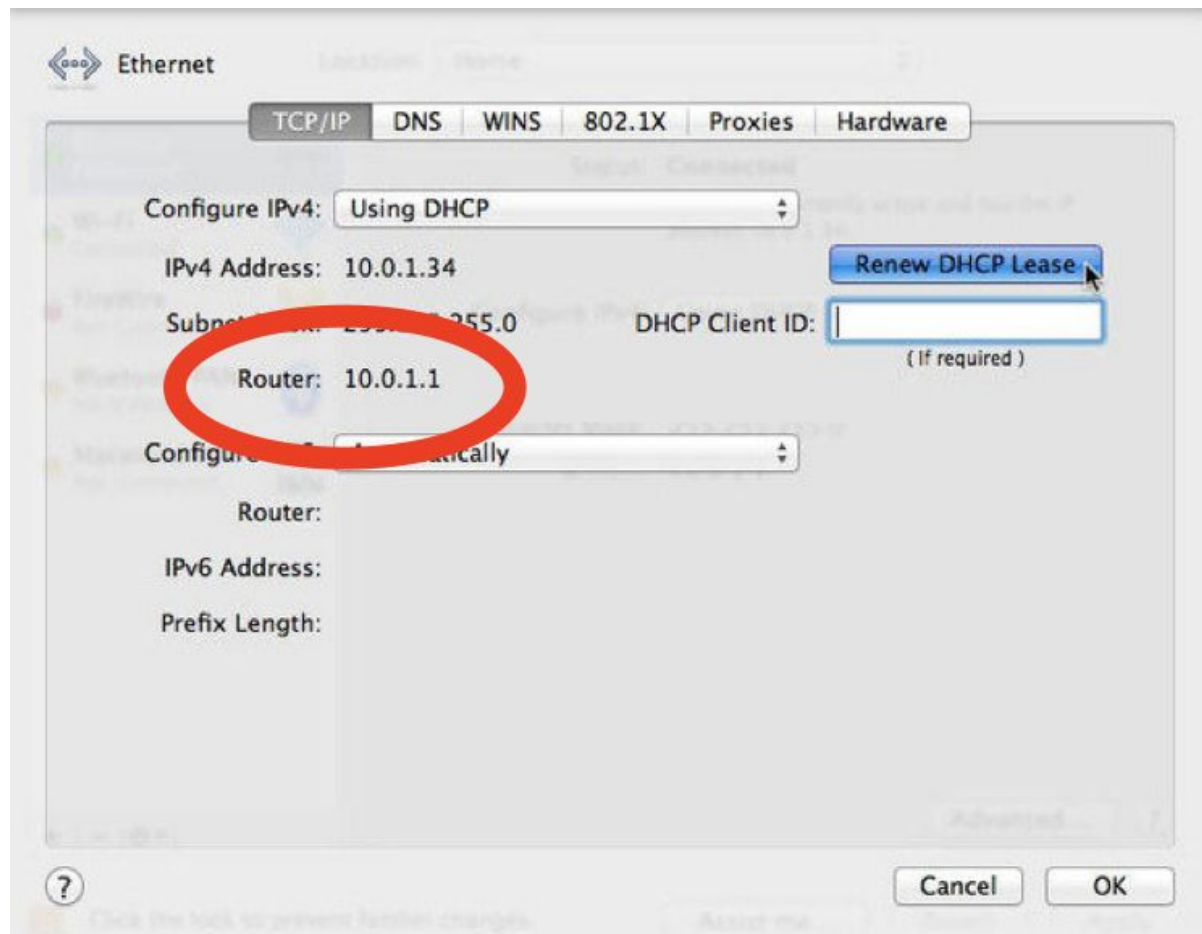
	209.81.96.49
--	--------------

	192.168.1.1
--	-------------

Manufacturer:	Realtek
---------------	---------

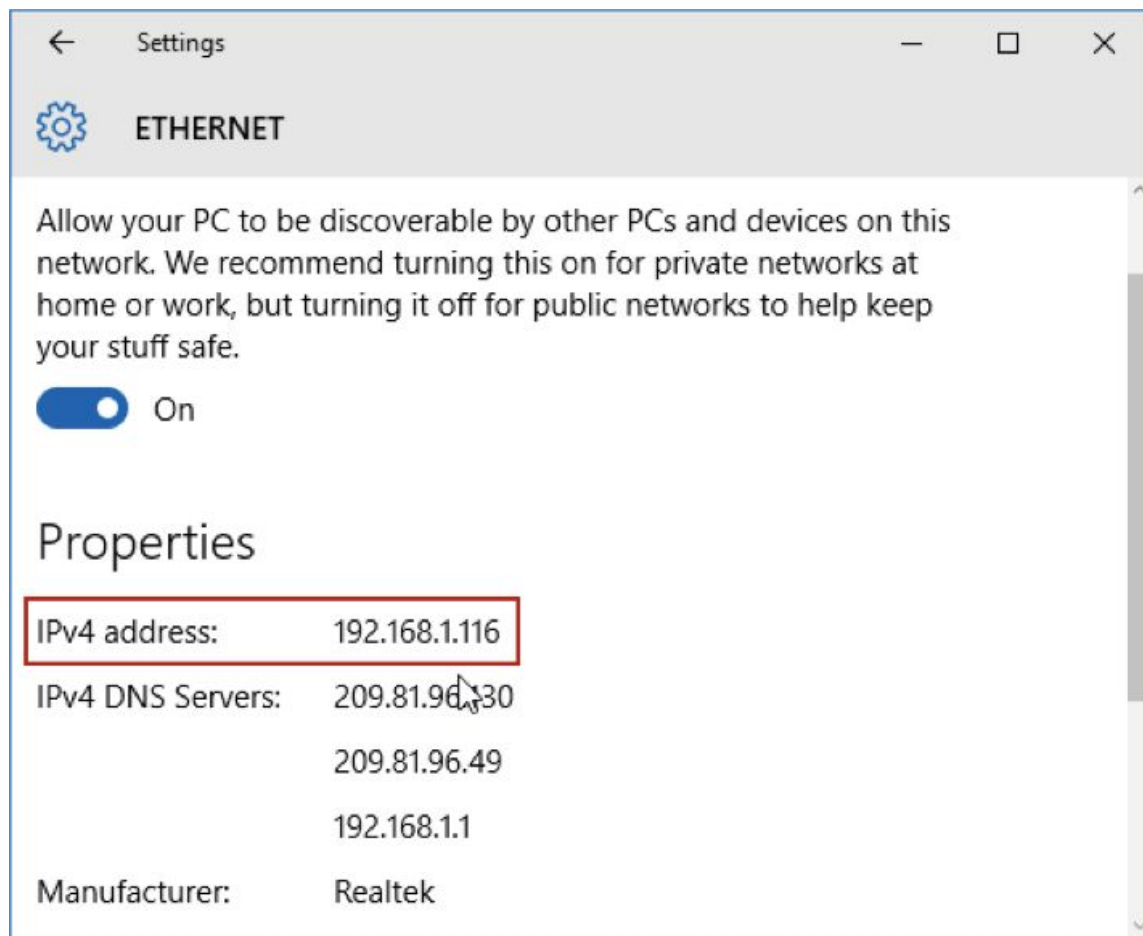


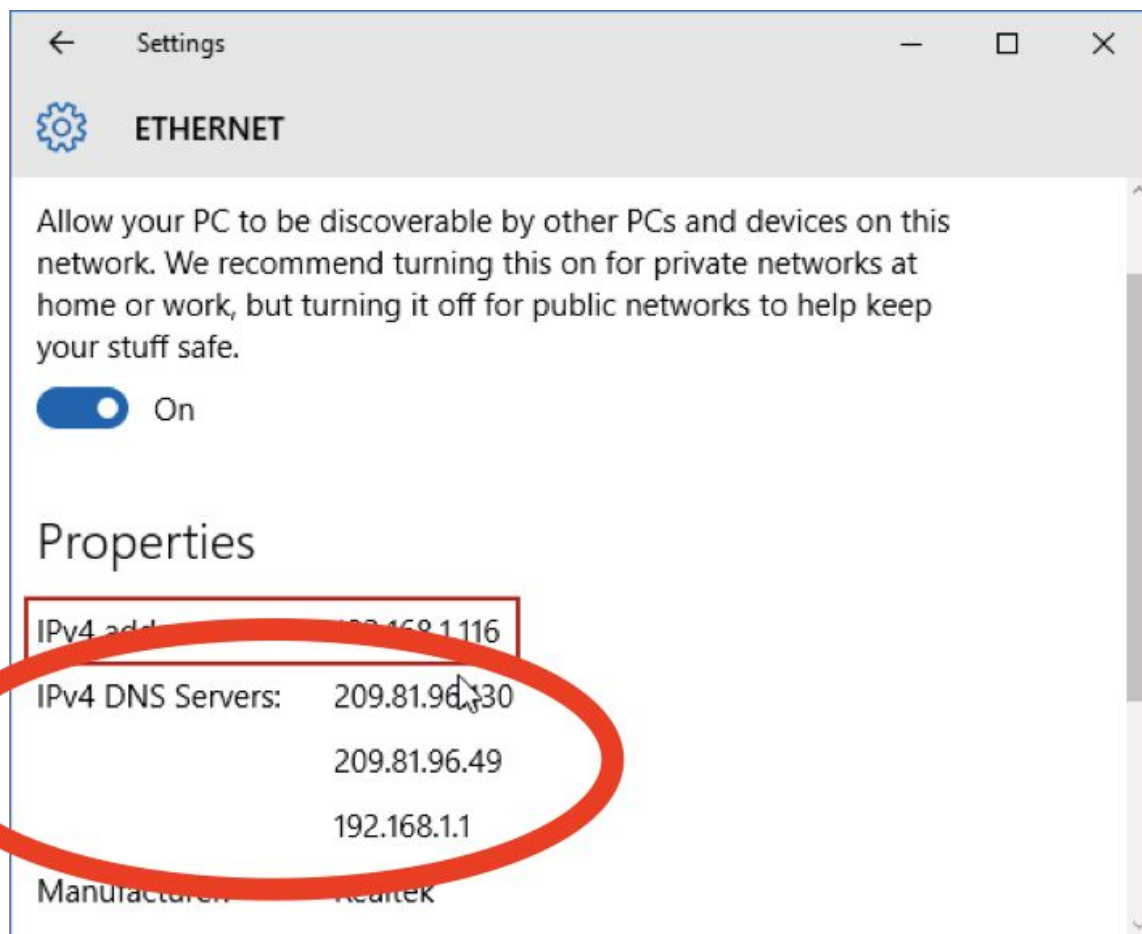


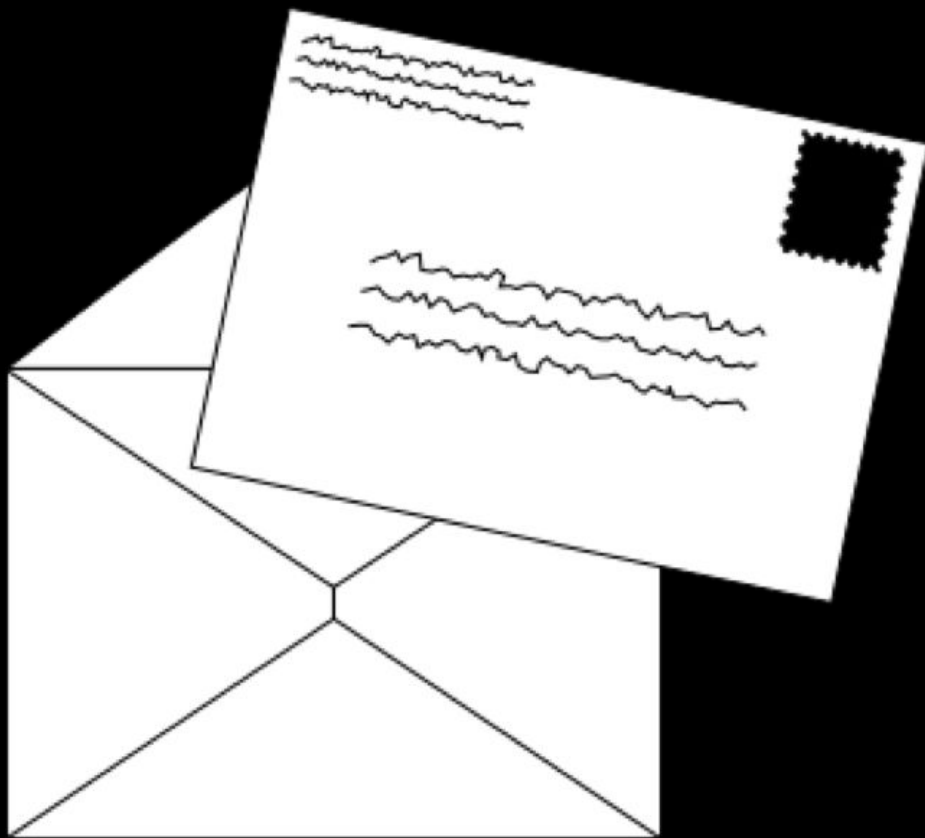




DNS












Global
HD

t View Go Window Help

   <http://275.3.6.28>

```

> switchView = [[UISwitch alloc] initWithFrameRect:
> [switchView setTag:997];
> [cell addSubview:switchView];
> [switchView release];
> }
>
> // recover switchView from the cell
> switchView = [cell viewWithTag:997];
> [switchView addTarget:self action:@selector(switchClicked)]
>
> // Set up the cell
> NSArray *crayon = [[[section objectAtIndex:indexPath.row]
> [cell setText:[object objectAtIndex:0]];
>
> // extract the component
> float xx = - [acceleration x];
> float yy = - [acceleration y];

```

```

> switchView = [[UISwitch alloc] initWithFr
> [switchView setTag:997];
> [cell addSubview:switchView];
> [switchView release];
> }
>
> // recover switchView from the cell
> switchView = [cell viewWithTag:997];
> [switchView addTarget:self action:@selec
>
> // Set up the cell
> NSArray *crayon + [[[section objectAtIn
> [cell setText:[objectAtIndex:0]];
>
> // extract the component
> float xx = - [acceleration x];
> float

```

<http://www.example.com/>

<http://www.example.com/>

<http://www.example.com/>

<http://www.example.com/>

<http://www.example.com/>

<http://www.example.com/index.html>

<http://www.example.com/>

HTTP

GET / HTTP/1.1

Host: www.example.com

...

GET /index.html HTTP/1.1

Host: www.example.com

...

GET / HTTP/1.1

Host: www.example.com

...

HTTP/1.1 200 OK

Content-Type: text/html

...

GET / HTTP/1.1

Host: harvard.edu

...

GET / HTTP/1.1

Host: www.harvard.edu

...

HTTP/1.1 301 Moved Permanently
Location: <https://www.harvard.edu/>
...

HTTP/1.1 404 Not Found
Content-Type: text/html
...

GET / HTTP/2

Host: www.example.com

...

HTTP/2 200

Content-Type: text/html

...

- 200 OK
- 301 Moved Permanently
- 302 Found
- 304 Not Modified
- 401 Unauthorized
- 403 Forbidden
- 404 Not Found
- 418 I'm a Teapot
- 500 Internal Server Error
- ...

GET / HTTP/1.1

Host: safetyschool.org

...

GET /search?q=cats HTTP/1.1

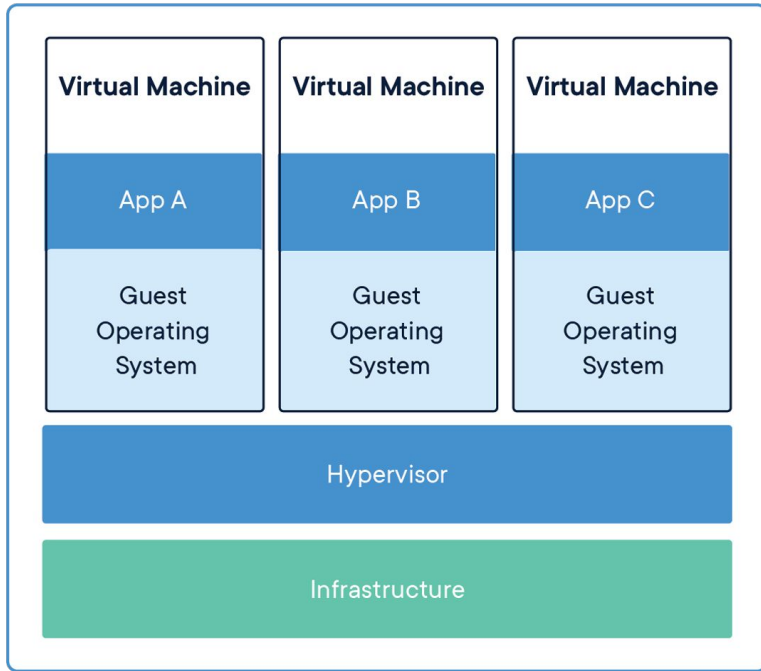
Host: www.google.com

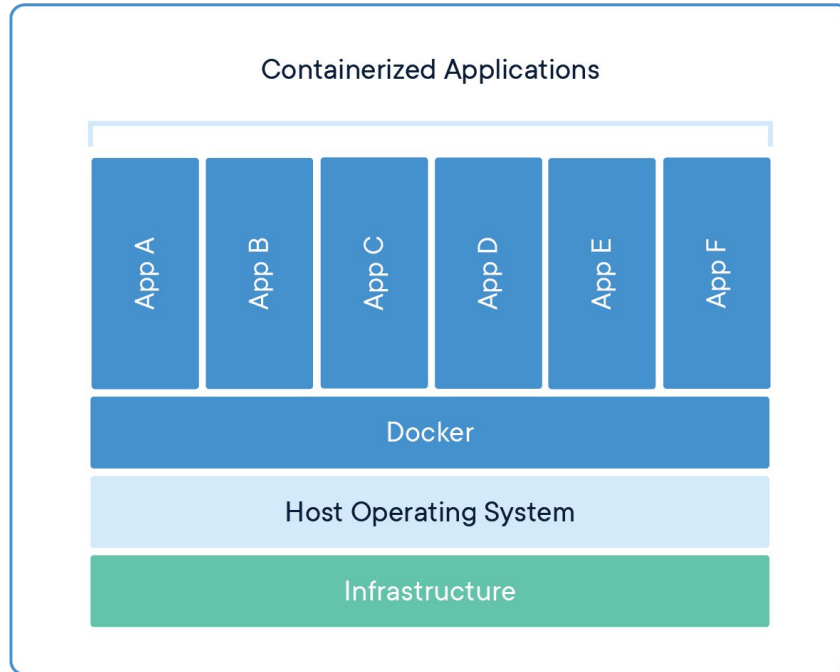
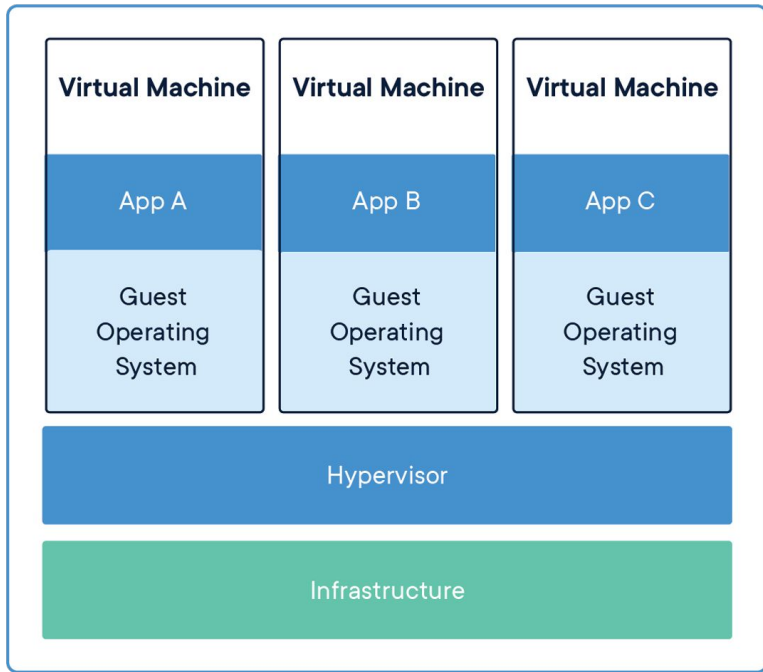
...

Internet Technologies, Cloud Computing

- vertical scaling
- horizontal scaling

- caching
- load balancing
- ...





- SAAS
- PAAS
- IAAS

ISPs and Net Neutrality

Gathering People's Private Data

Assignment 4