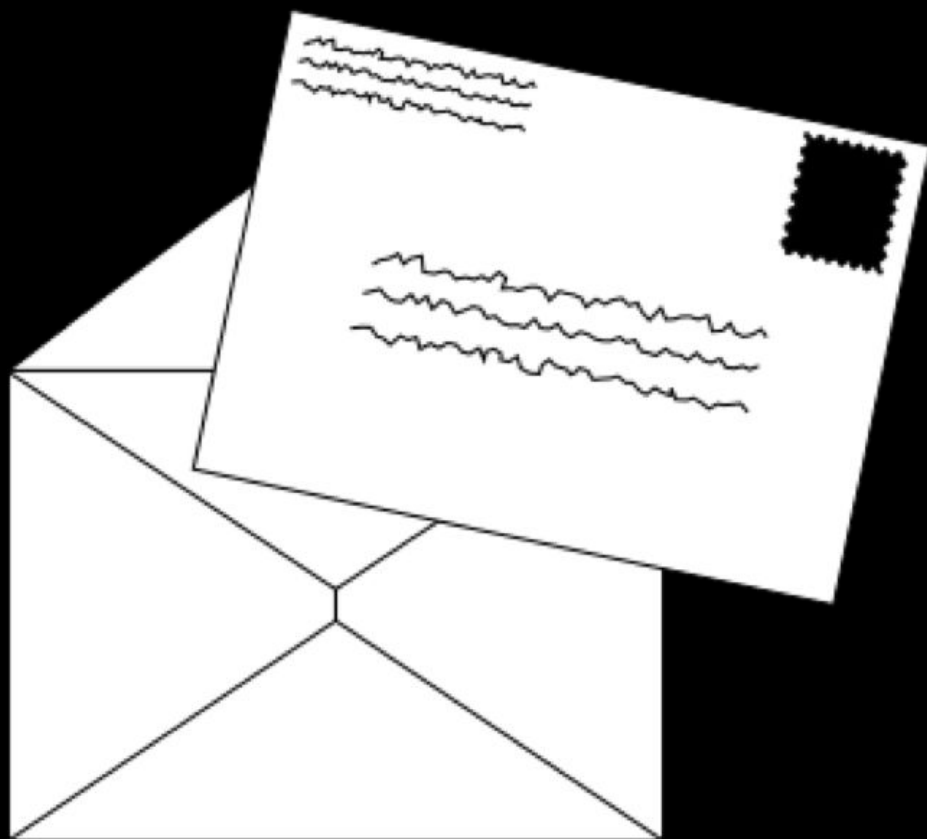


CS50 for MBAs

Internet Technologies

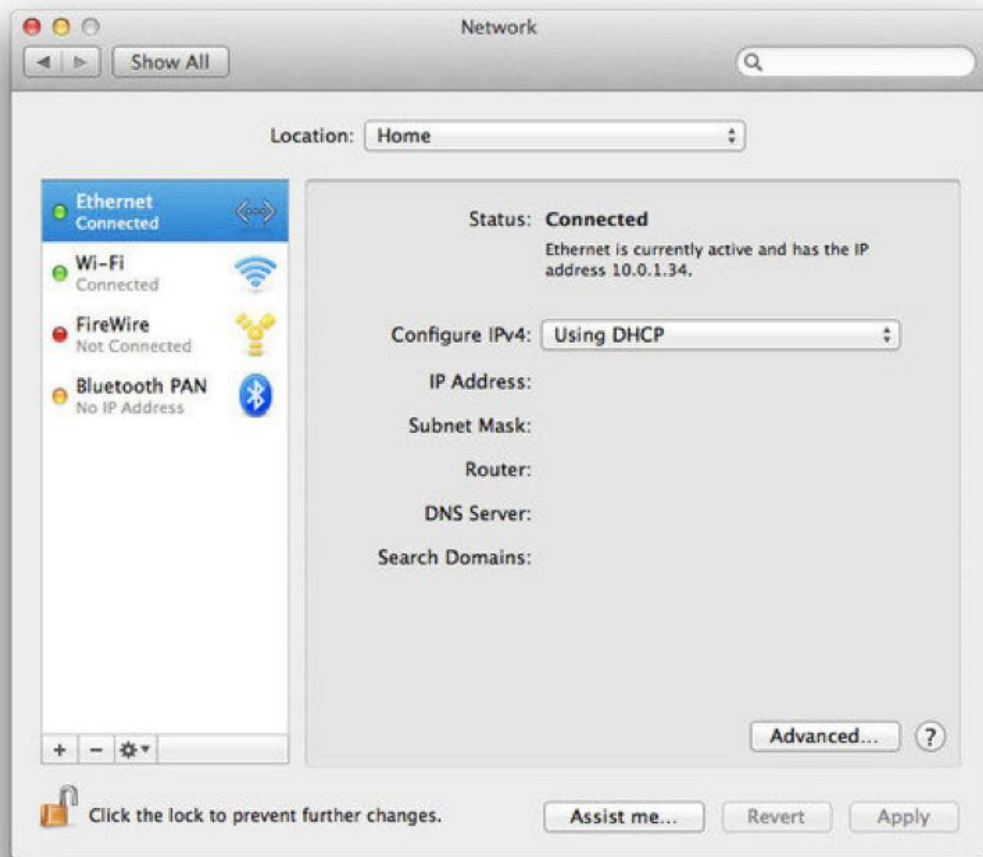


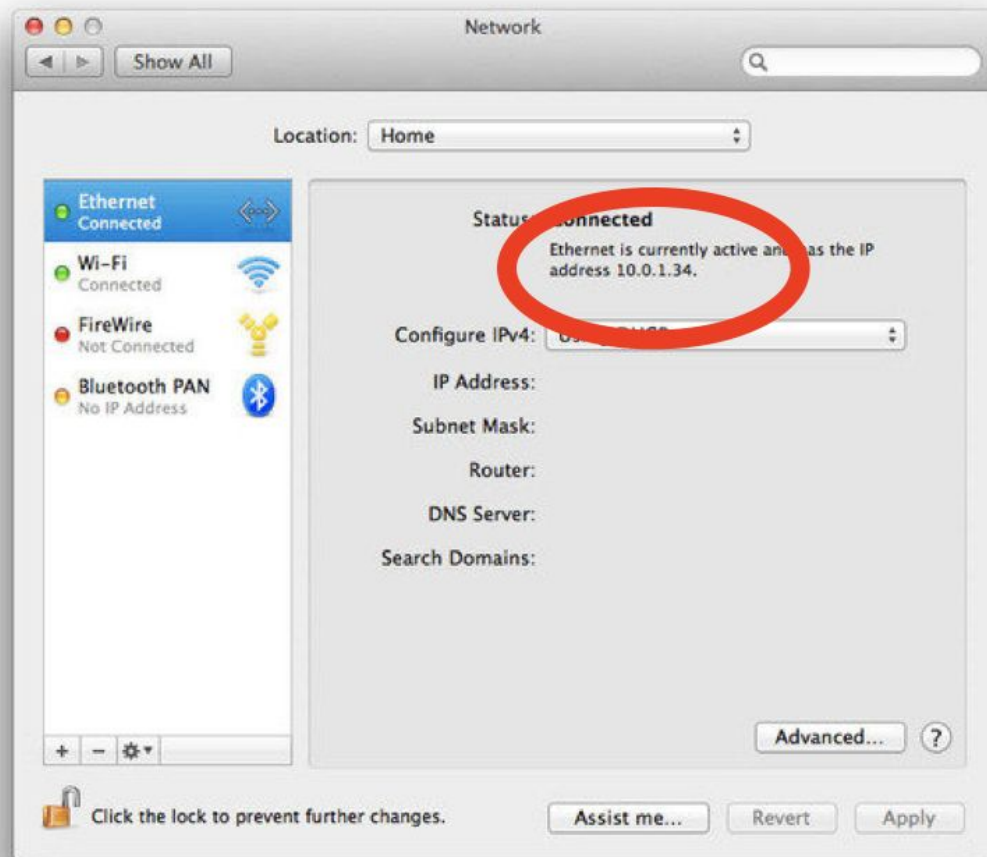
IP

###.

- 10.###
- 172.16.## – 172.31.##
- 192.168.##
- ...

DHCP







Settings



ETHERNET

Allow your PC to be discoverable by other PCs and devices on this network. We recommend turning this on for private networks at home or work, but turning it off for public networks to help keep your stuff safe.



On

Properties

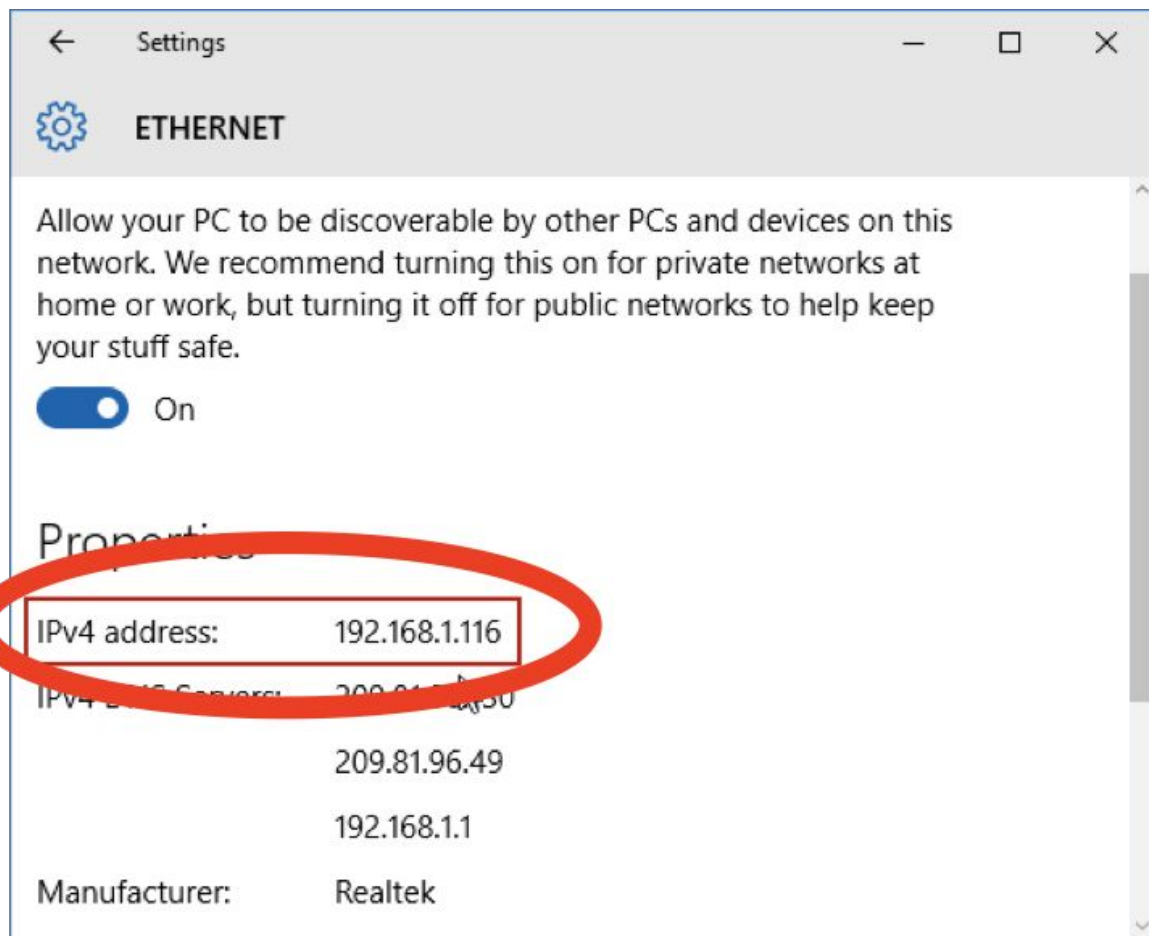
IPv4 address:	192.168.1.116
---------------	---------------

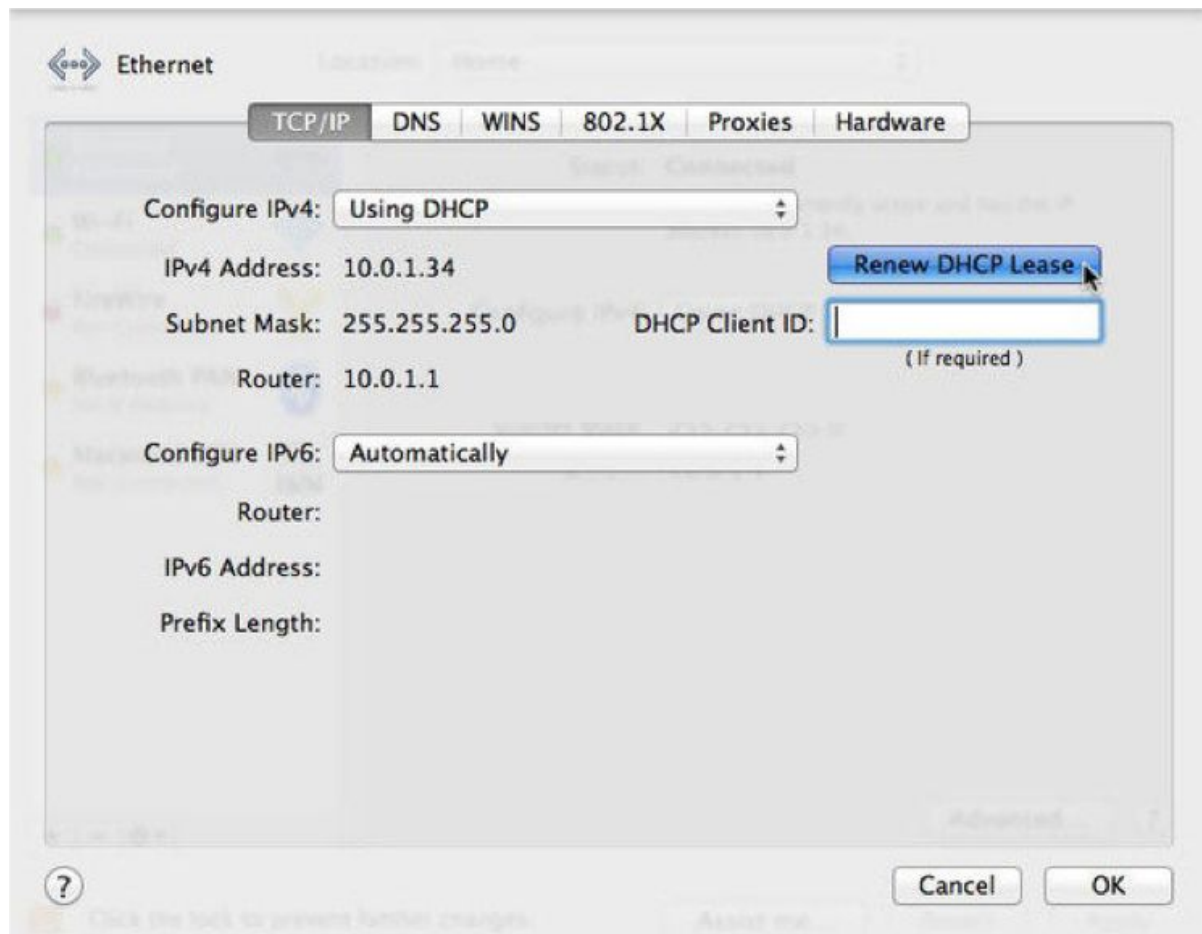
IPv4 DNS Servers:	209.81.96.30
-------------------	--------------

	209.81.96.49
--	--------------

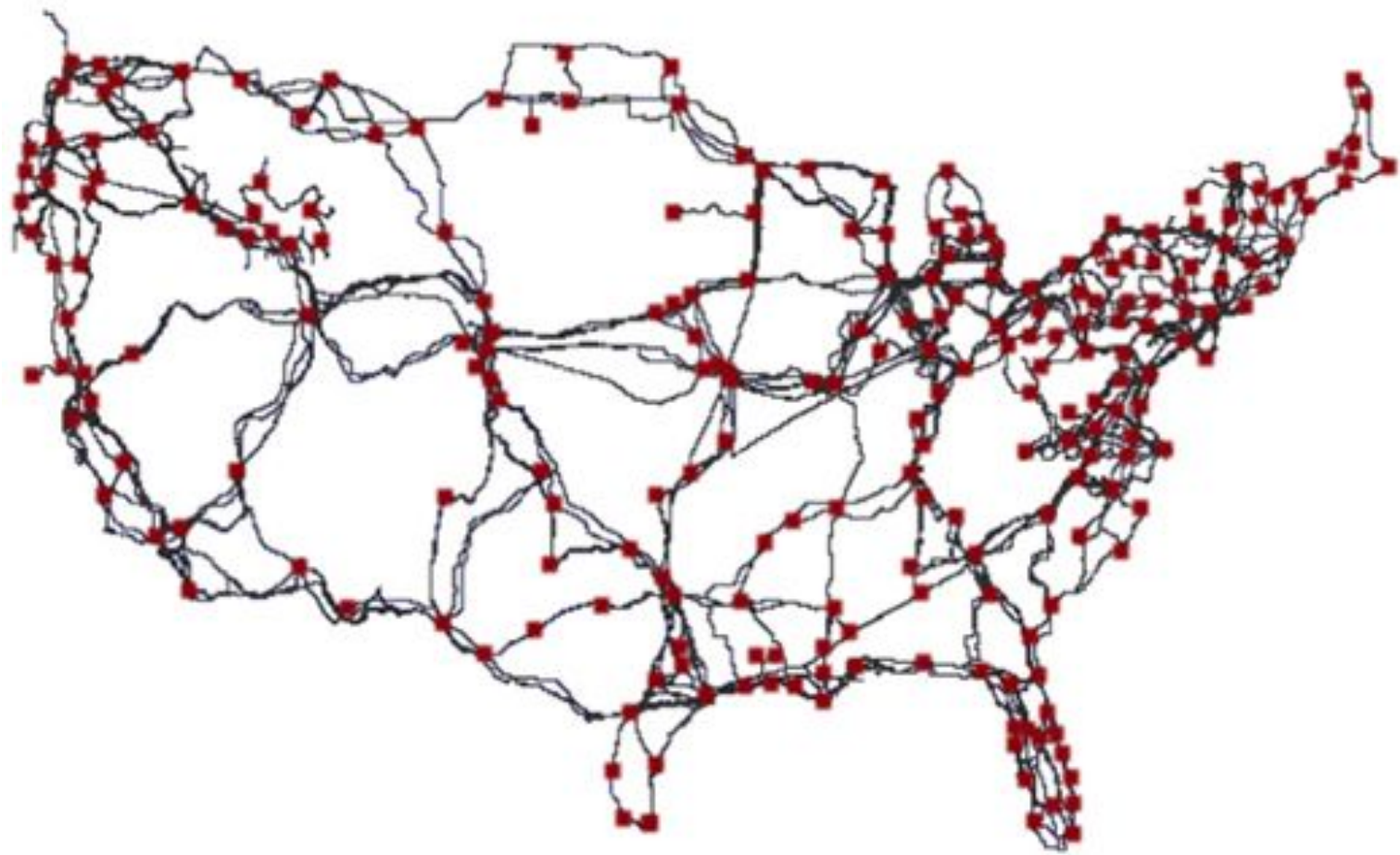
	192.168.1.1
--	-------------

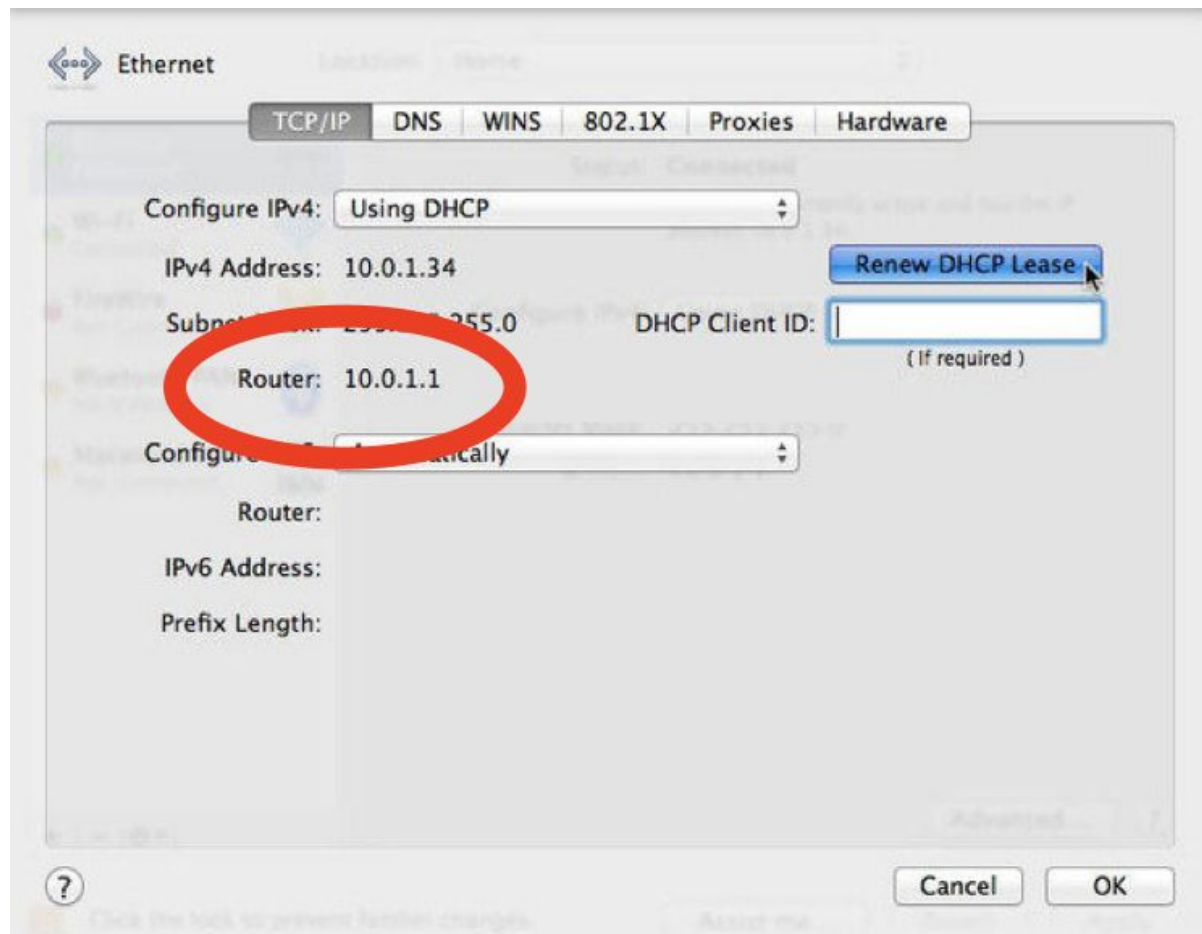
Manufacturer:	Realtek
---------------	---------





NAT





TCP

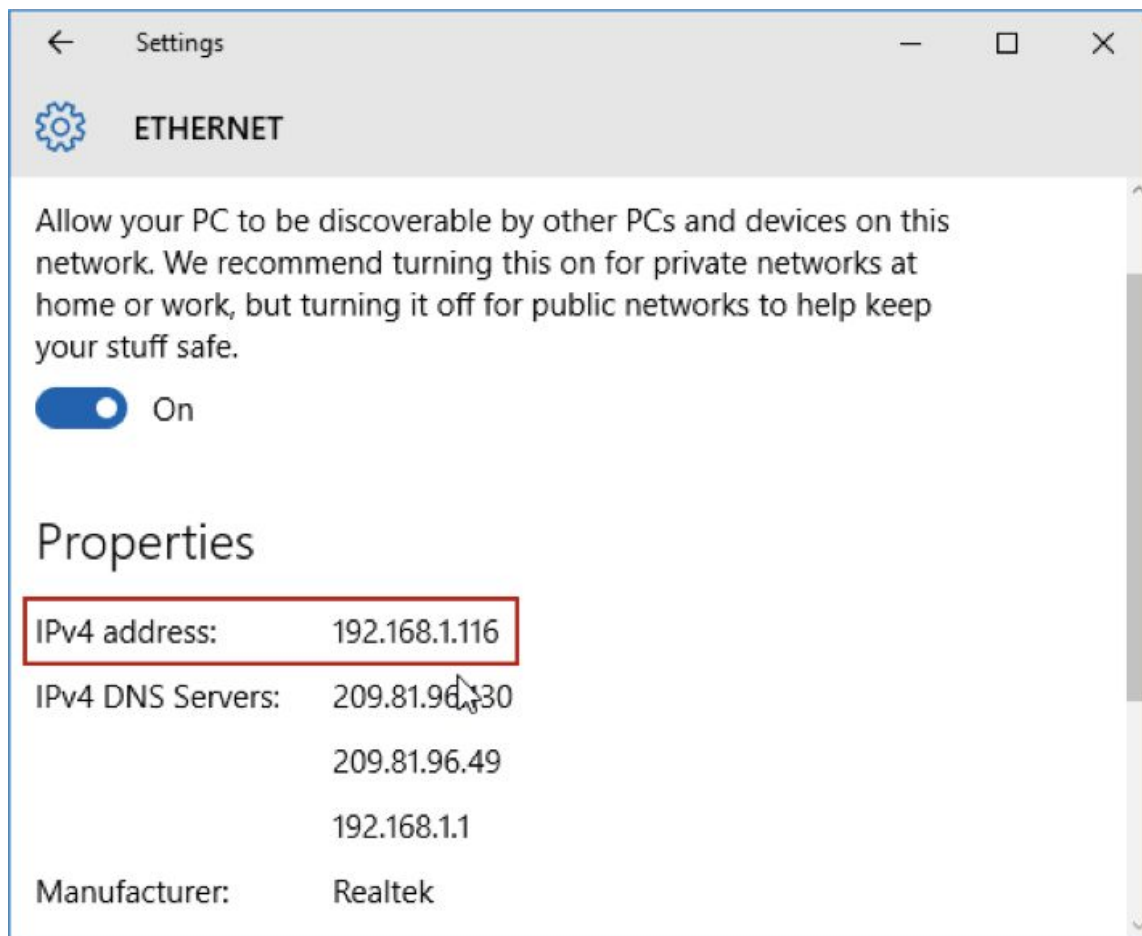
Ports

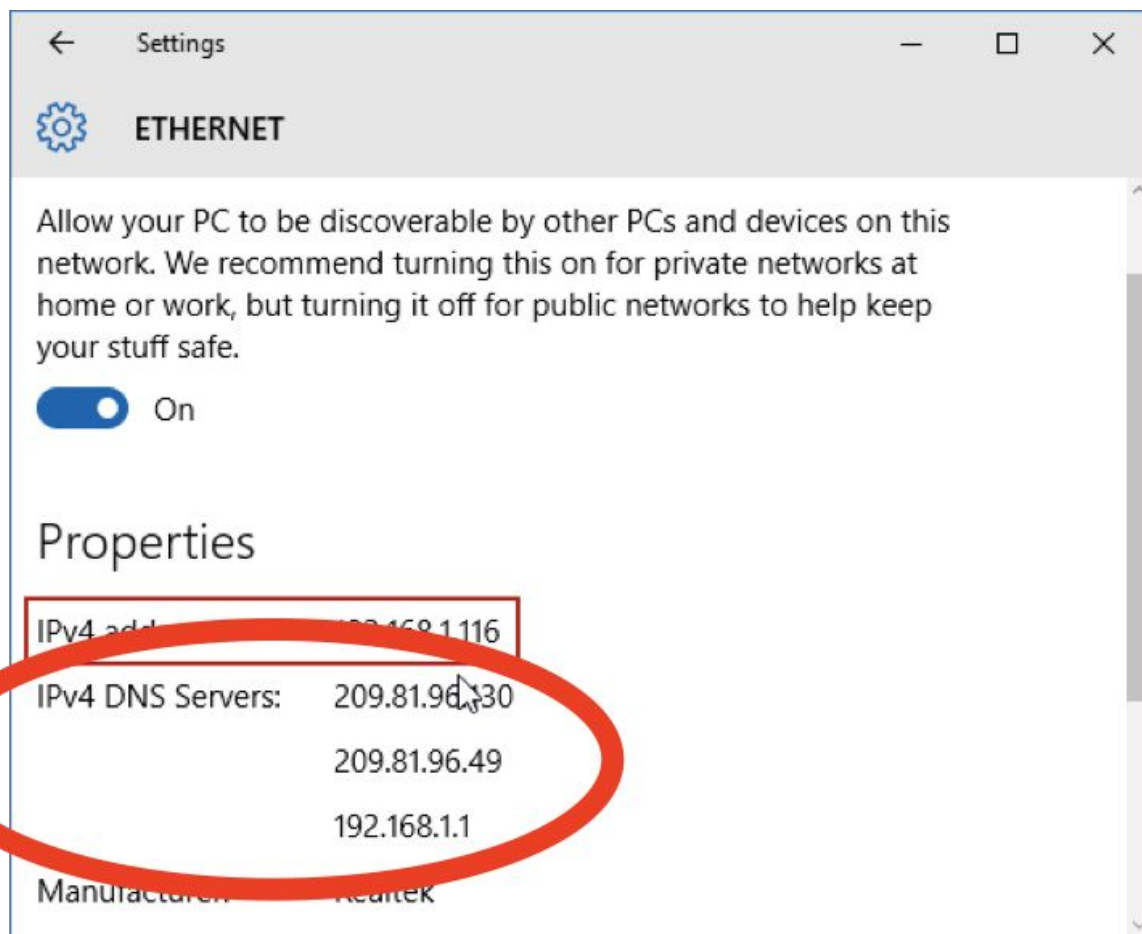
- 80, 443
- 143, 587
- ...





DNS










Global
HD

t View Go Window Help

   <http://275.3.6.28>

```
> switchView = [[UISwitch alloc] initWithFrameRect:
> [switchView setTag:997];
> [cell addSubview:switchView];
> [switchView release];
> }
>
> // recover switchView from the cell
> switchView = [cell viewWithTag:997];
> [switchView addTarget:self action:@selector(switchViewToggled)];
>
> // Set up the cell
> NSArray *crayon = [[NSArray alloc] initWithObjects:@"Red", @"Blue", @"Green", nil];
> [cell setText:[crayon objectAtIndex:0]];
>
> // extract the component
> float xx = - [acceleration x];
> float yy = [acceleration y];
```



```
> switchView = [[UISwitch alloc] initWithFrameRect:rect];
> [switchView setTag:997];
> [cell addSubview:switchView];
> [switchView release];
> }
>
> // recover switchView from the cell
> switchView = [cell viewWithTag:997];
> [switchView addTarget:self action:@selector(switchClicked)]
>
> // Set up the cell
> NSArray *crayon = [[[section objectAtIndex:indexPath.row]
> [cell setText:[object objectAtIndex:indexPath.row]];
>
> // extract the component
> float xx = - [acceleration x];
> float yy = - [acceleration y];
```


HTTP

<https://www.example.com/>

<https://www.example.com/>

<https://www.example.com/>

<https://www.example.com/>

<https://www.example.com/>

<https://www.example.com/>

<https://www.example.com/index.html>

HTTP

GET / HTTP/1.1

Host: www.example.com

...

GET /index.html HTTP/1.1

Host: www.example.com

...

HTTP/1.1 200 OK

Content-Type: text/html

...

GET / HTTP/1.1

Host: harvard.edu

...

HTTP/1.1 301 Moved Permanently
Location: <https://www.harvard.edu/>
...

HTTP/1.1 404 Not Found
Content-Type: text/html
...

200 OK
301 Moved Permanently
302 Found
304 Not Modified
307 Temporary Redirect
401 Unauthorized
403 Forbidden
404 Not Found
418 I'm a Teapot
500 Internal Server Error
503 Service Unavailable
...

GET / HTTP/1.1

Host: safetyschool.org

...

GET /search?q=cats HTTP/1.1

Host: www.google.com

...

Assignment 4

Office Hours

CS50 for MBAs

Internet Technologies